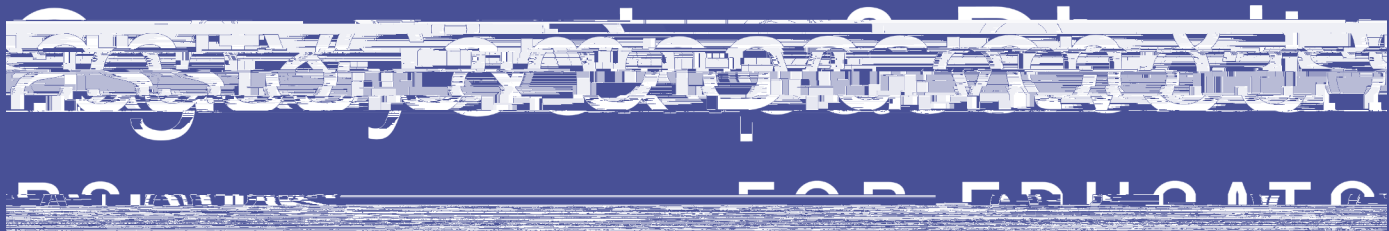
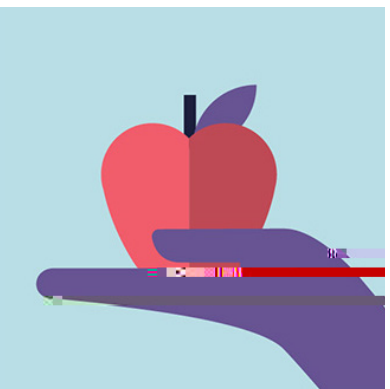
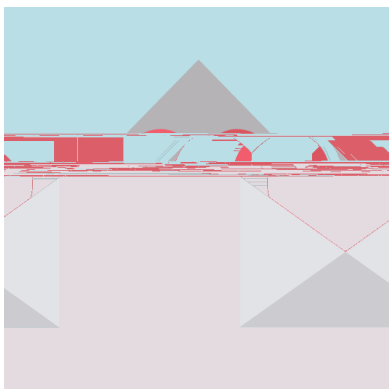
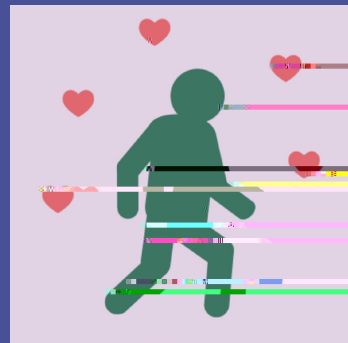


Coming Back to School with Kindness

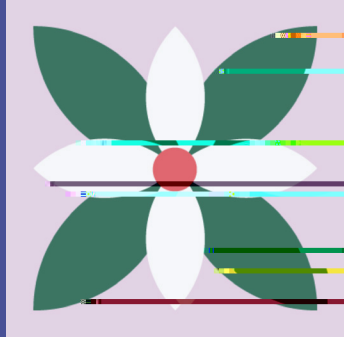




Being Kind

A large, light-colored decorative area featuring a faint green silhouette of a person with a cane walking. The background is decorated with horizontal lines in various colors (pink, yellow, green, blue, purple) and several large, semi-transparent red hearts. On the left side, there are three blue checkmark icons and a vertical line of green dots, with a red dashed line below it.

● May we have patience and kindness for one another and ourselves during dif cult times.



Being Kind to



