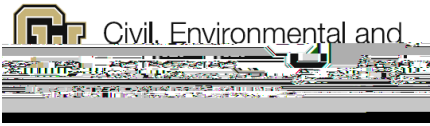


The



The Center for Infrastructure, Energy, and Space Testing (CIEST), is an experimental testing facility with geotechnical centrifuge, structural dynamics, and materials testing.

The geotechnical facility houses three centrifuges, including a 400 g-

### Architectural Engineering Institute (AEI)

The AEI Chapter is a student organization dedicated to understanding and advancing the state-of-the-art of the architecture, engineering, and construction (AEC) profession through networking, design competitions, & learning experiences in the AEC community.



### Associated General Contractors (AGC)

We strive to promote the construction industry in three areas which include education, service, and networking, and we have construction professionals speak at every weekly meeting to present on a specific project or on their company.

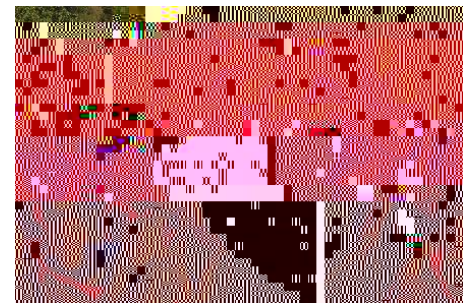


### American Society of Civil Engineers (ASCE)

Our chapter coordinates with industry members to learn about opportunities within Civil Engineering, and compete in the Concrete Canoe, Innovation, Sustainability, Surveying, and Steel Bridge competitions through the ASCE Rocky Mountain Regional Symposium.

### American Society of Heating, Refrigeration and Air Conditioning Engineers

Our chapter coordinates events, including industry expert talks/presentations, innovative academic research talks, technical workshops, site visits, and social events, helping you to network with industry professionals, stay up to date with research and industry best practices, and offer hands-on experience with HVAC equipment.

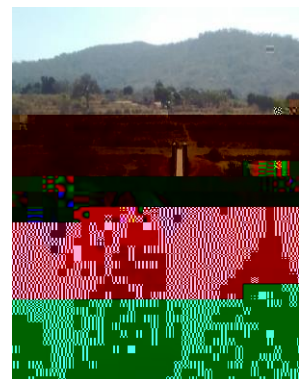


### Bridge Buffs

Bridge Buffs is the CU Chapter of a national NGO called Engineers in Action, a non-profit organization that designs and builds pedestrian footbridges, and is dedicated to reducing poverty created by rural isolation by building pedestrian bridges over impassable rivers in communities that would otherwise be unable to afford them.

### Engineers Without Borders (EWB)

EWB's mission is to partner with developing communities to improve quality of life through environmentally sustainable, equitable, and economical engineering projects. Our chapter was the first chapter of EWB-USA.



### Illuminating Engineering Society

The CU IES Chapter is a community committed to inspiring those interested in lighting by providing tools for career success and building a shared knowledge base, while promoting engagement with industry professionals and each other.



---

---

The following companies have hired our undergraduate students:

- Adolfson & Peterson Construction
- AECOM
- AEI | Affiliated Engineers, Inc.
- Air Force Civilian Service
- Alfred Benesch & Company
- Ames Construction Inc
- Apex Engineers, Inc.
- Arcadis
- ARCO/MURRAY Natl. Construction  
Company
- Barnard Construction
- Big-D Construction
- BranchPattern
- Brinkmann Constructors
- Bureau of Reclamation